

# BIOCHAR



**18 &  
34kg**

**A supplement to boost productivity,  
regulate rumen function.**

## TYPICAL ANALYSIS

Molasses	8%
Salt (NaCl)	31.5%
Biochar	30%
Calcium (Ca)	7.5%

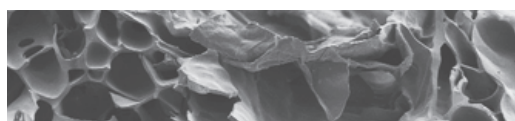
**FOR ANIMAL TREATMENT ONLY.**

**THIS PRODUCT DOES NOT CONTAIN  
RESTRICTED ANIMAL MATERIAL.**



Olsson's Biochar in the diets of livestock appears to increase growth rates, pasture production and permeability of soil.

Biochar has a high surface area. It binds toxins and improves rumen habitat. Biochar also helps promote dung beetle activity.



*Biochar under a microscope.*

## DIRECTIONS FOR USE

### Feeding Instructions:

Use in accordance with the Olsson Indicator system.

**Sheep/Goats:** 5-10g per head per day

**Cattle:** 50-100g per head per day

Replace blocks immediately when consumed.

Intake is recommendation only. Higher intakes are normally the result of mineral deficiencies.

Avoid contact with skin and eyes.

### Storage Instructions:

Store out of direct sunlight and under cover. Edible carton and packaging.